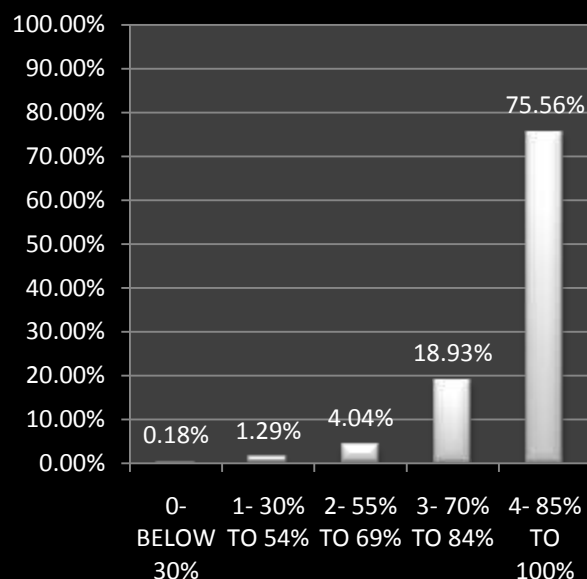
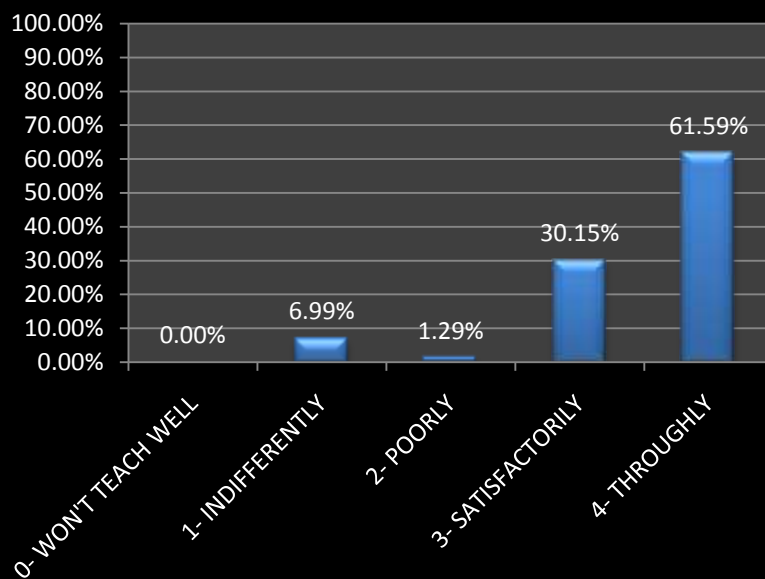


# STUDENT SATISFACTION SURVEY 2024-2025 GRAPHICAL PRESENTATION

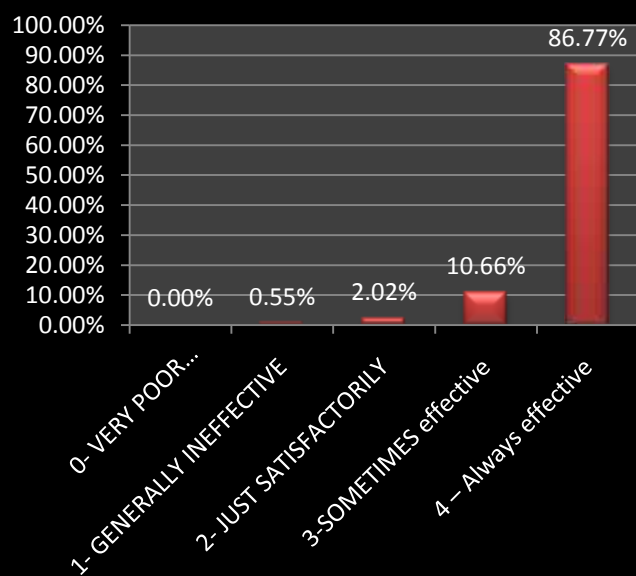
**1. How much of the syllabus was covered in the class?**



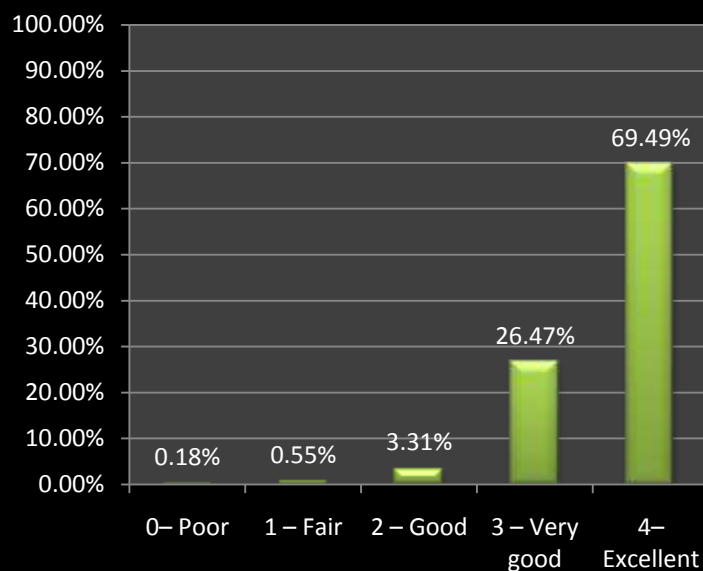
**2. How well did the teachers prepare for the classes?**



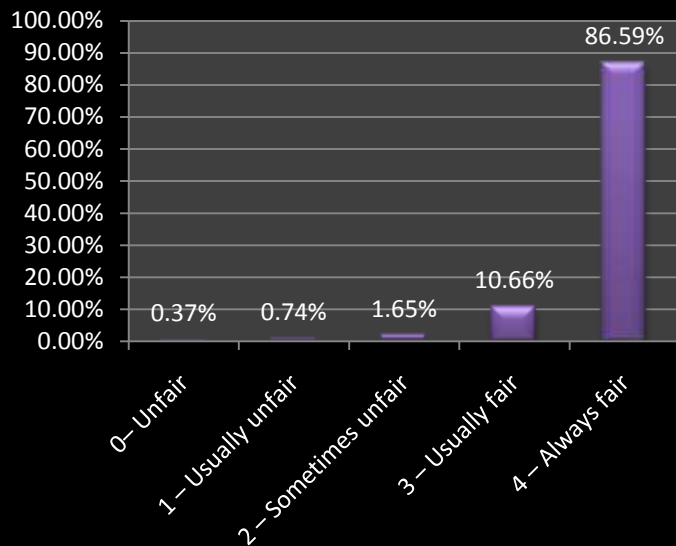
**3. How well were the teachers able to communicate?**



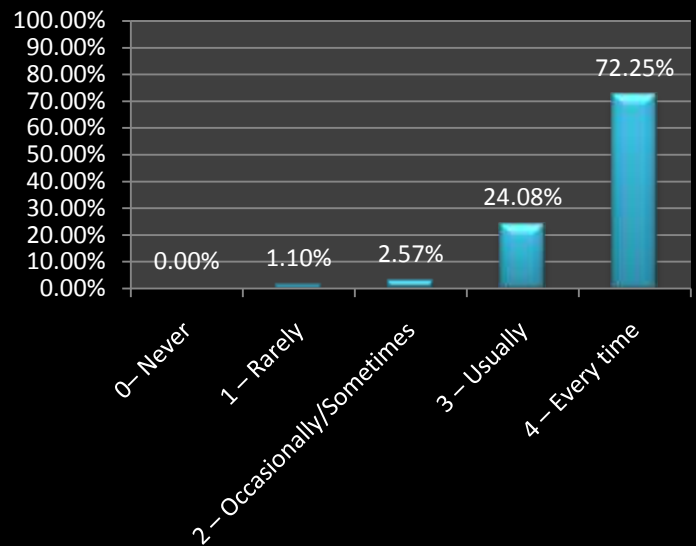
**4. The teacher's approach to teaching can best be described as**



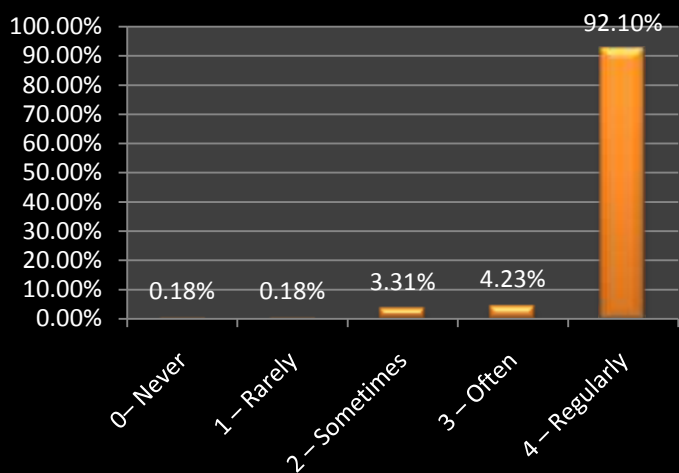
### 5. Fairness of the internal evaluation process by the teachers.



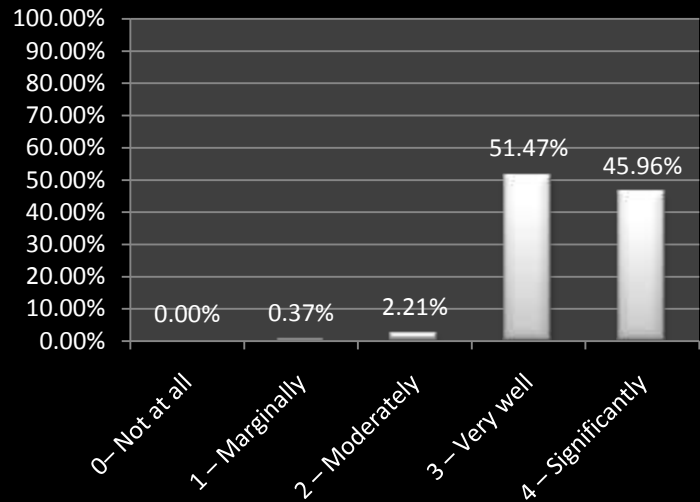
### 6. Was your performance in assignments discussed with you?



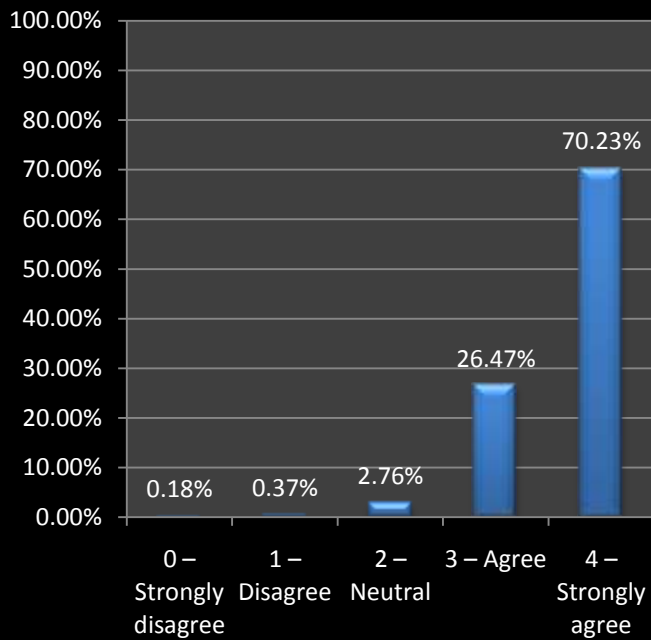
### 7. The institute takes active interest in promoting internship, student exchange, field visit opportunities for students.



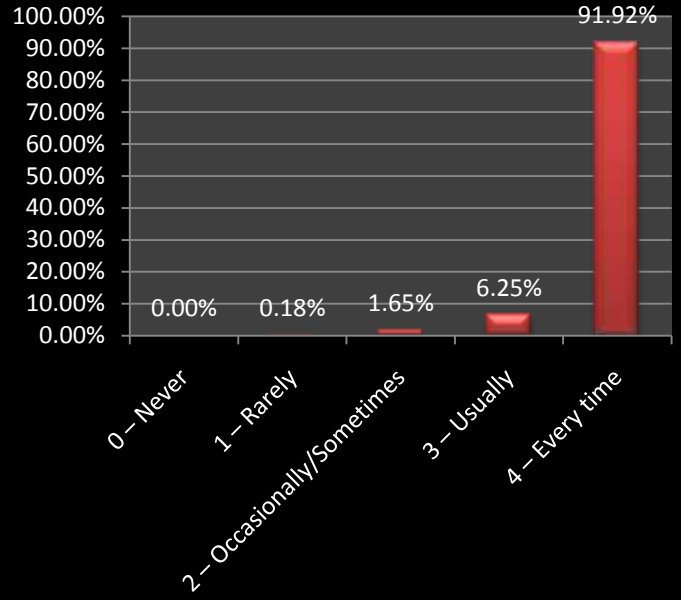
### 8. The teaching and mentoring process in your institution facilitates you in cognitive, social and emotional growth.



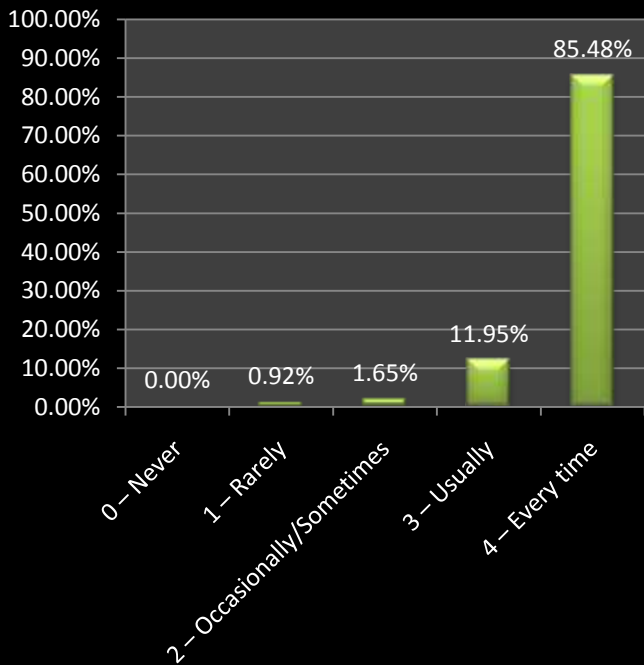
**9. The institution provides multiple opportunities to learn and grow.**



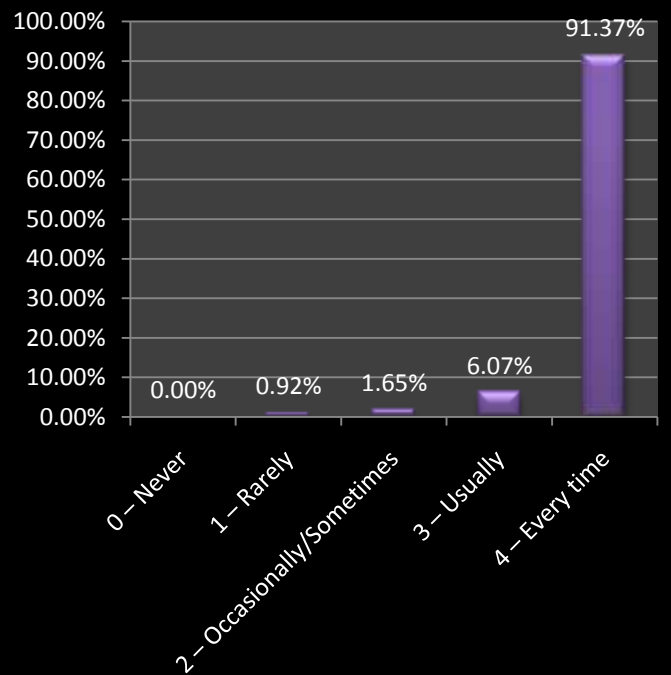
**10. Teachers inform you about your expected competencies, course outcomes and programme outcomes.**



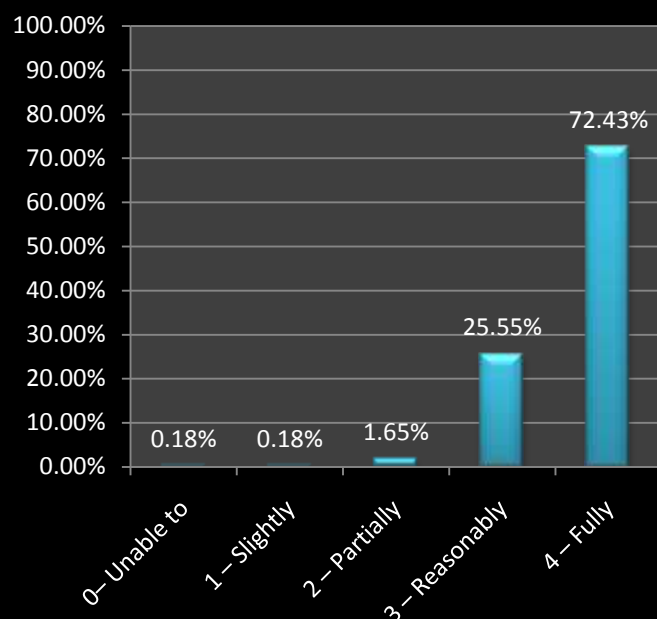
**11. Your mentor does a necessary follow-up with an assigned task to you.**



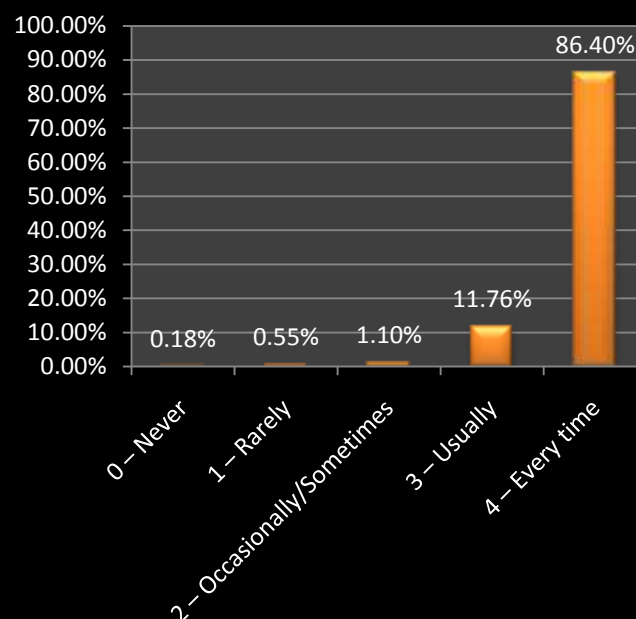
**12. The teachers illustrate the concepts through examples and applications.**



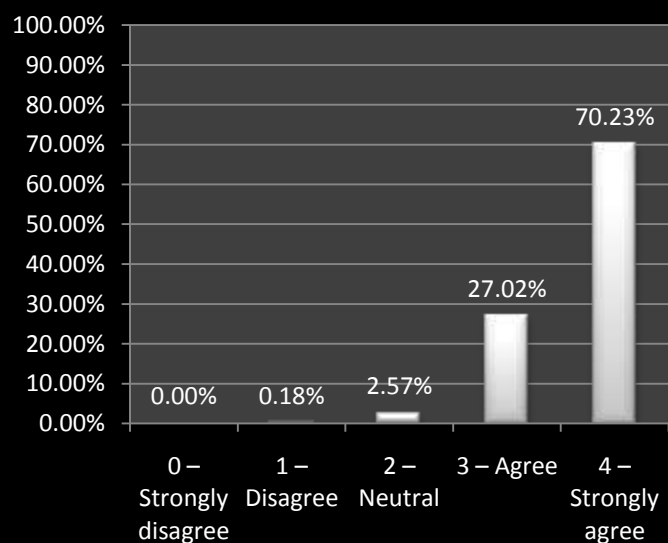
**13. The teachers identify your strengths and encourage you with providing right level of challenges.**



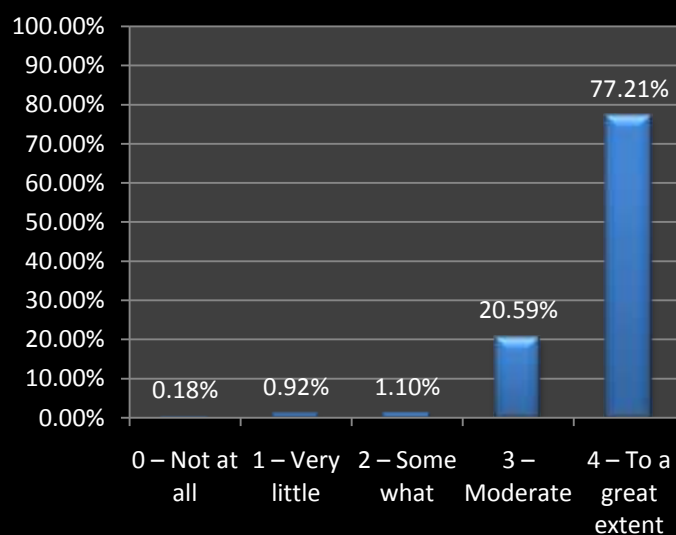
**14. Teachers are able to identify your weaknesses and help you to overcome them.**



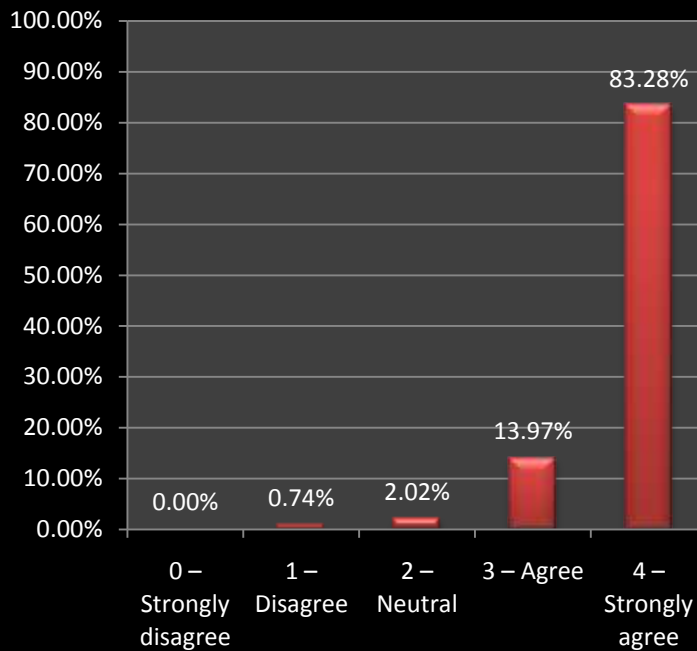
**15. The institution makes effort to engage students in the monitoring, review and continuous quality improvement of the teaching learning process.**



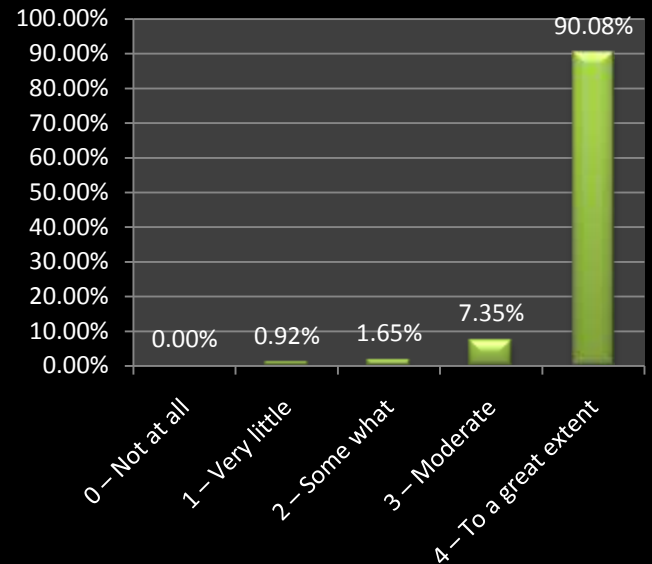
**16. The institute/ teachers use student centric methods, such as experiential learning, participative learning and problem solving methodologies for enhancing learning experiences.**



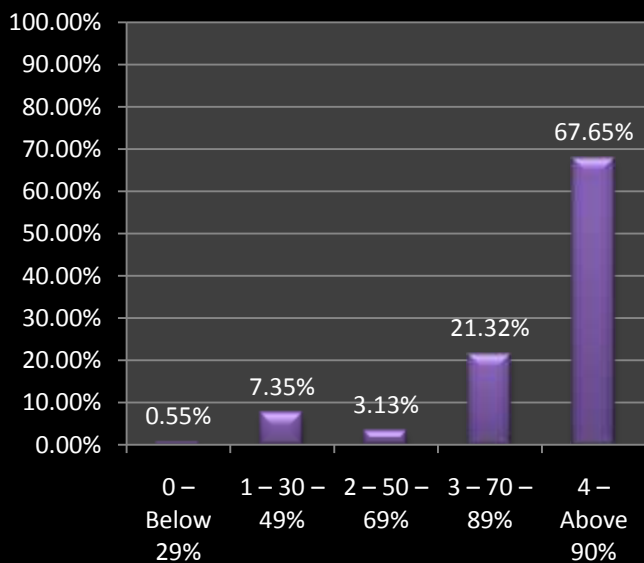
**17. Teachers encourage you to participate in extracurricular activities.**



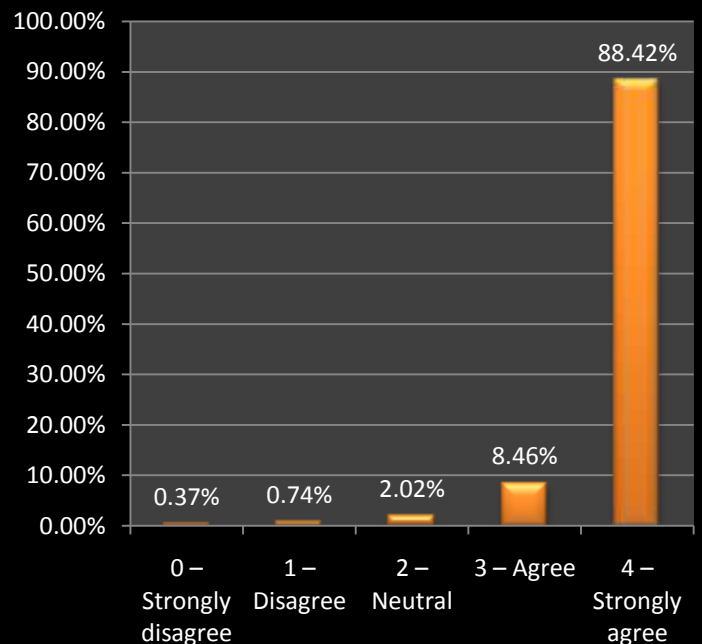
**18. Efforts are made by the institute/ teachers to inculcate soft skills, life skills and employability skills to make you ready for the world of work.**



**19. What percentage of teachers use ICT tools such as LCD projector, Multimedia, etc. while teaching.**



**20. The overall quality of teaching-learning process in your institute is very good.**



LINK OF DATA & ANALYSIS SHEET: [https://docs.google.com/spreadsheets/d/19soLo-ZdRdGgilifoillTFXd\\_s55j\\_fg/edit?usp=sharing&ouid=113657317452648655061&rtpof=true&sd=true](https://docs.google.com/spreadsheets/d/19soLo-ZdRdGgilifoillTFXd_s55j_fg/edit?usp=sharing&ouid=113657317452648655061&rtpof=true&sd=true)